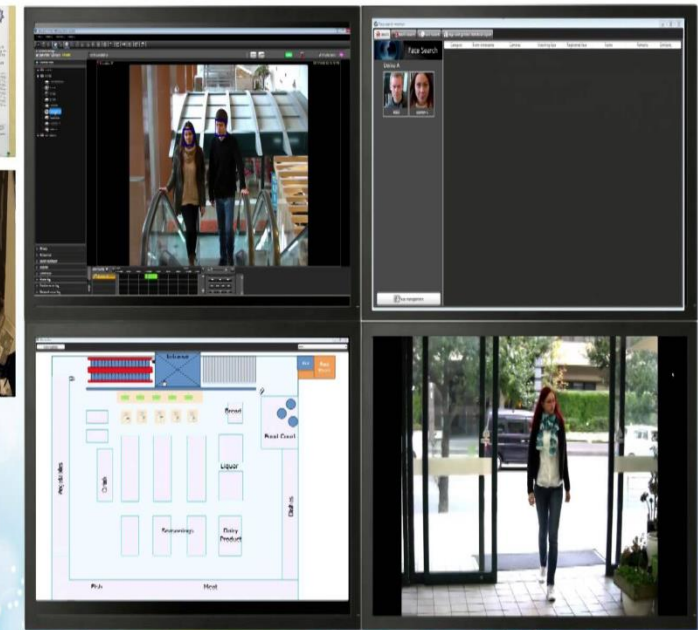



# Face Capturing



Surveillance Room



- The term facial recognition is used to describe the process in which a computer application verifies a person's identity. The software is used to detect the location of a specific face in a particular photo or video, and it's wise enough to ignore other surrounding objects such as buildings, animals, cars or trees.
- Bio Finder is the solution Security that makes it possible to search for a specific subject, through facial recognition, Facial bone structure, in one or various of your business' recorded videos - often your own CCTV camera footage - at speeds 12x faster than real-time.

- 
- Face recognition is one of the least invasive biometrics, since data is captured effortlessly and generally involves no user interaction. Bio Surveillance, detects multiple faces in real-time, incorporates on-the-fly video enrolment, identifies previously trained individuals, and facilitates run-time management of alarms and individuals.
  - Bio Surveillance NEXT is a high performance video-surveillance solution for facial recognition, specially designed for the simultaneous identification of subjects in crowded and changeable environments. Optimized for GPU architectures, it works 40 times faster than traditional systems (up to 150 fps), and works with very high-resolution video streams.
  - Bio Surveillance is optimized for environments with large crowds in constant movement, such as airports, metro and train stations, hotels, shopping centers, sports stadiums and urban centers.